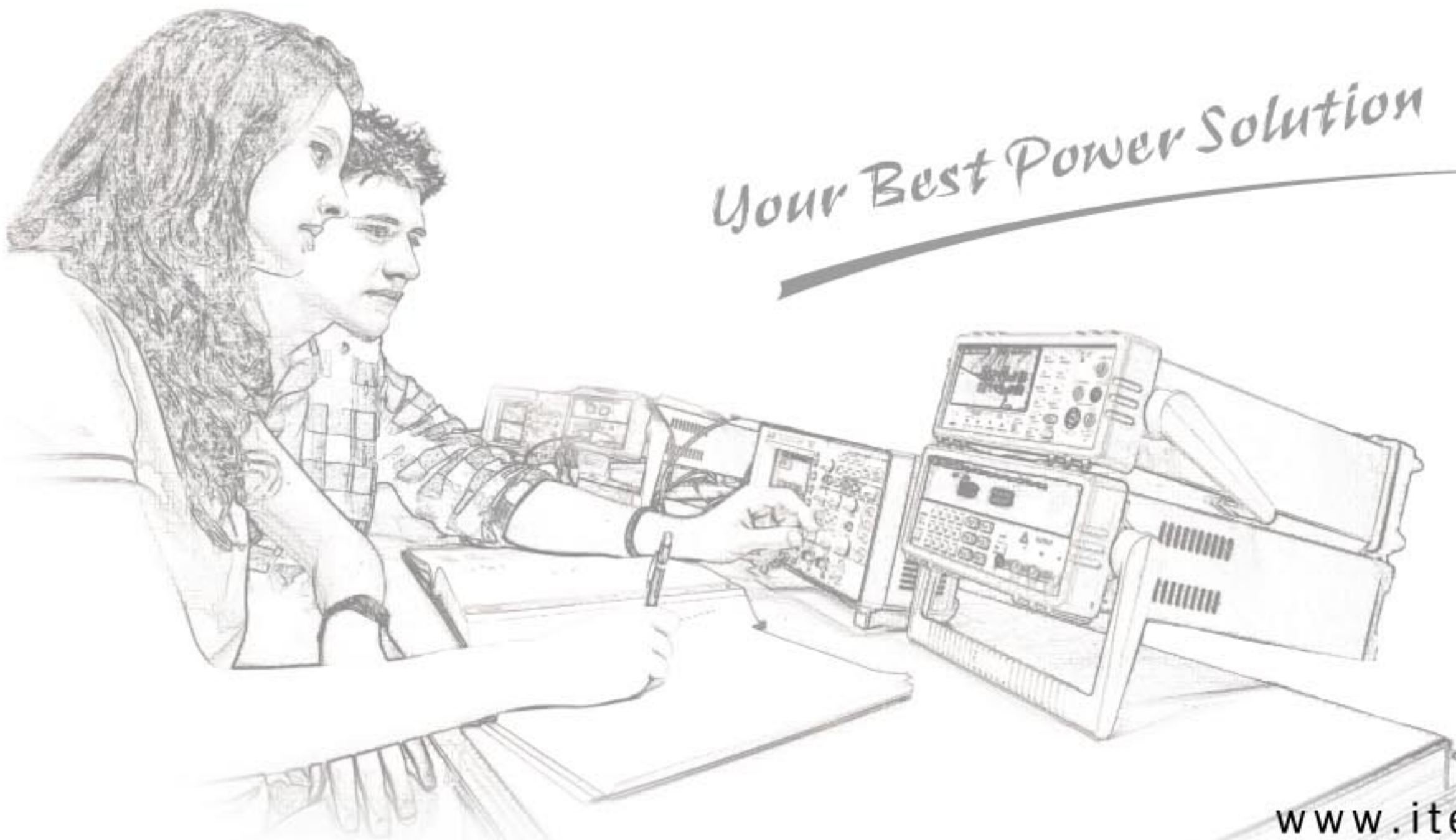




ITS9500 POWER SUPPLY AUTO TEST SYSTEM

- ✓ Support over 40 testing items, meet diversified testing requirement
- ✓ Standard 5U size, more flexible and convenient



Your Best Power Solution



ITS9500 Power Supply Auto Test System

ITS9500 power supply test system is a convenient, practical and cost-efficient test system designed for switching power supply test. This system adopts a new scheme, overcoming the shortcomings of traditional test system, which is characterized by bulky size, high price, difficult to operate and maintain. Inside the 5U size, this system can provide test results superior to traditional large cabinet test system, thus saving the space as well as the cost for customers.

Thanks to the extensive product line of ITECH, users can choose the most suitable instrument to build the ITS9500 test system based on their needs, thus providing the maximum flexibility and scalability for system architecture.

ITS9500 test system can be applied for tests of products such as power supply unit, LED drive power and battery charger. The system provides over 40 test items and through the powerful automatic test software of ITS9500, users can select test items based on the characteristics of the device under test to easily complete the test process. The test software provides two types of user interface, the professional type and the simple type to easily meet varied demands of different users.





Support over 40 testing items

Best cost-effective unit

Modular design for easy maintenance

Simple operation, no need programming ability

Integrates 8 modulars into the system,
meet diversified testing requirement.

System features

The standard 5U unit integrates electronic load, programmable AC power supply, programmable DC power supply, noise analyzer, timing analyzer, digital electric meter, oscilloscope, I/O card and other precision instruments, and can be installed on the counter top or inside a standard cabinet.

- Best cost-effective unit
- High measurement precision
- Simultaneous operation of six systems at maximum
- A power supply unit which can test several single outputs at one time
- Test program management/editing function
- Statistic report output/editing function
- Multi-level authority setting function
 - User authority setting
 - System accesses record
- BarCodeReader supported by the software
- Optional external fixture for improving test speed
- Meet the ENERGY STAR measurement specification
- Modular design for easy maintenance
- Over 40 test items

Test items

ITS9500 power test system provides complete test items for users, and different from traditional test system, users are not required to have program editing ability to operate the system. Users only have to choose the test items from over 40 test items provided by the system based on their needs and the system will complete the test process in order.

Input test

- 1、Input power disturbance test
- 2、AC cycle drop out test
- 3、Input surge current test
- 4、Input RMS current test
- 5、Input peak current test
- 6、Input power factor test
- 7、Input voltage ramp test
- 8、Input frequency ramp test

Output test

- 9、DC output voltage test
- 10、DC output current test
- 11、Peak-peak noise test
- 12、RMS noise test
- 13、Current ripple test
- 14、Efficiency test
- 15、In-test adjustment test
- 16、Power good signal
- 17、Power fail signal
- 18、P/S ON signal
- 19、Overshoot voltage test

Protection tests

- 20、OVP protection test
- 21、OLP protection test
- 22、OPP protection test
- 23、Short circuit protection test
- 24、Under voltage protection test

Time series/dynamic tests

- 25、Turn on time
- 26、Hold-up time
- 27、Rise time
- 28、Fall time
- 29、Transient spike test
- 30、Attachment point timing test
- 31、Output voltage sequence

Stability test

- 32、Power effect test
- 33、Load effect test
- 34、Mixed effect test

Special tests

- 35、Extended measurement test
- 36、Analog output control
- 37、PWM output control
- 38、Can bus read/write
- 39、GPIB read/write
- 40、RS232 read/write
- 41、RS485 read/write
- 42、I2C read/write
- 43、TTL signal control
- 44、Relay control
- 45、Bar code scan

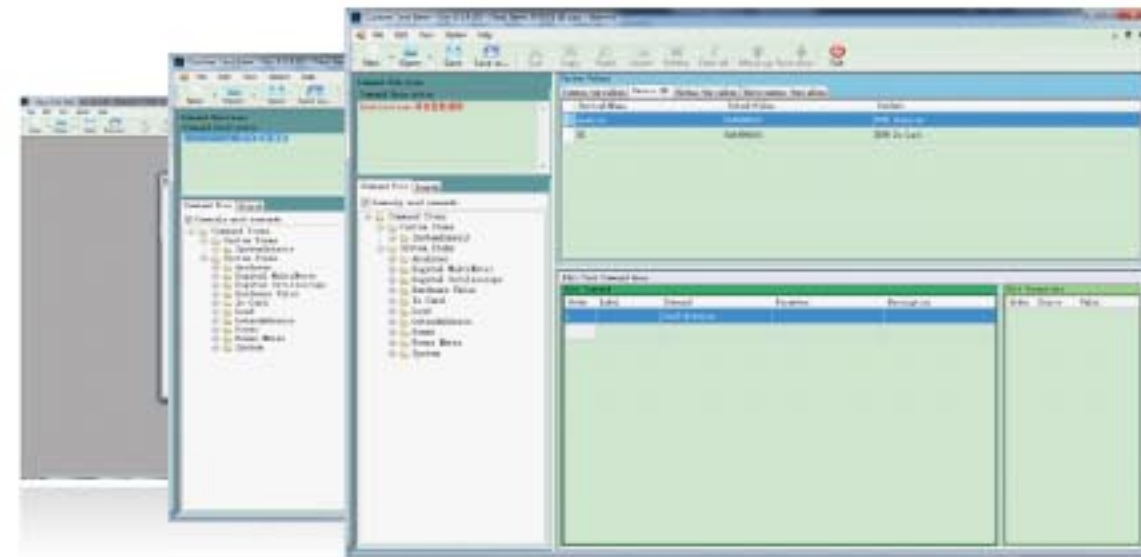


ITECH

ITS9500 Power Supply Auto test system

■ Test program editing function

ITS9500 test system enables users to connect several edited test items to form a test program. The system will carry out test in order, thus significantly reducing the test time.



■ Support simultaneous operation of several systems

One set of ITS9500 system test software can support simultaneous operation of six systems at maximum



Comprehensive and variable analysis tools

■ Self-defined report template

ITS9500 test system supports users to save the test data in the form of a test report and the report format can be self-defined, thus significantly reducing time.

■ Report management

On the "Report Inquiry" interface of ITS9500 test system, user can inquire/edit/print reports by inputting the report number or scanning the bar code.

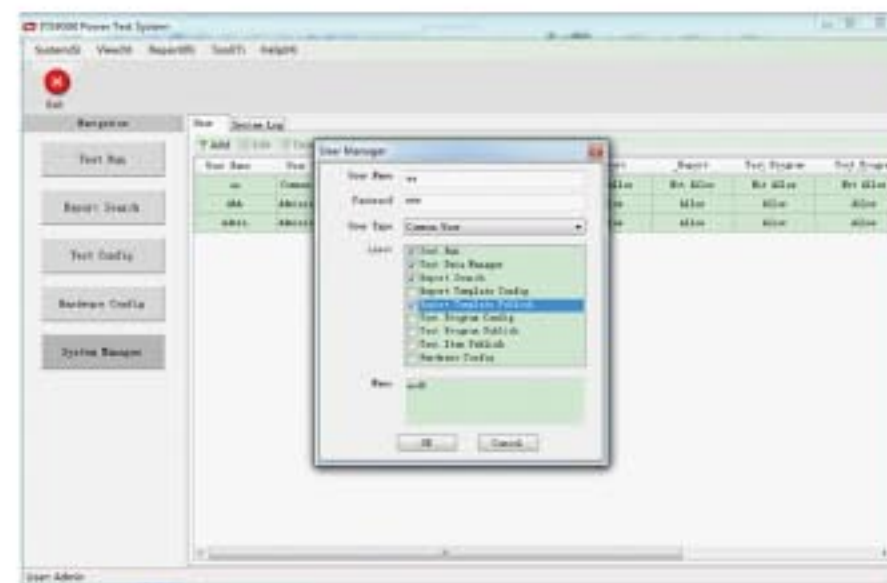


Report inquiry and analysis function interface

Perfect and safe management system

■ Set user authority.

"User management" enables users to set authorities for different users



Your Best Power Test Solution

ITS9500 Power Supply Auto test system

■ System log

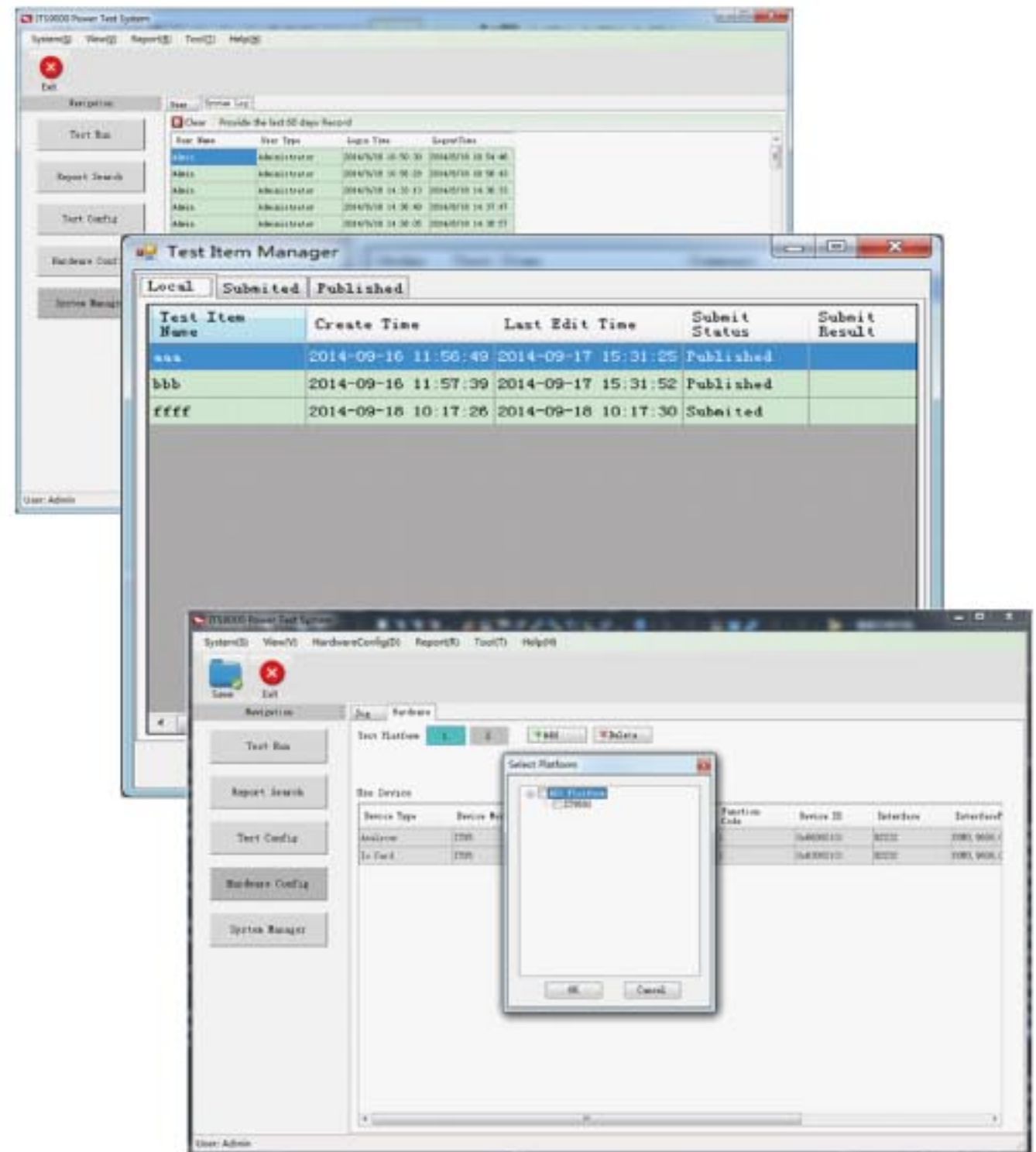
The system log will record the login information of users, including user name, type, login/logoff time.

■ Test item/program management

Users can understand the release, review and edit of test items as well as the operation of test program.

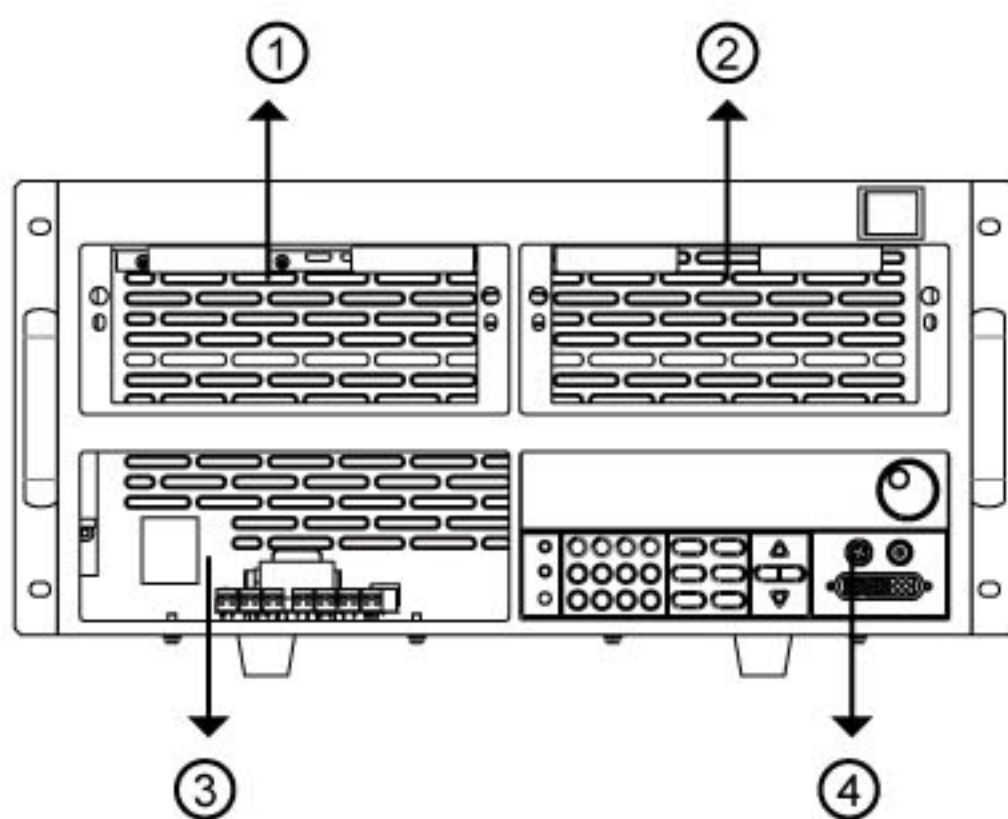
■ Hardware configuration

Through the "Hardware configuration" function, users can choose equipment from the instrument list to configure the system and connect bar code/fixture to realize automatic test.

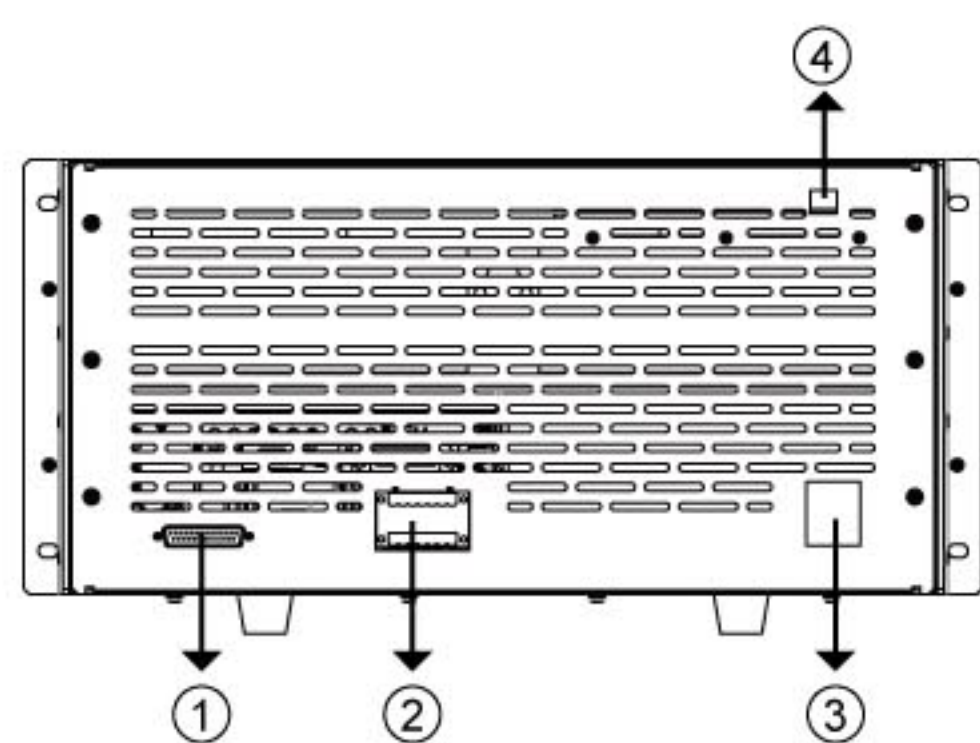


High performance hardware configuration

ITS9500 power supply test system adopts flexible hardware framework architecture integrating necessary hardware test devices, thus facilitating input cost control and test efficiency improvement



1, 2, 3 and 4 can be used for connecting OVP power, AC/DC power, electric load, switch analyzer, etc.



1. Scalable I/O
2. Relay output (10~16 IO Pin)
3. AC power input
4. USB communication port

System configuration

■ Programmable AC power supply

ITS9500 power supply test system's optional AC power can cover 300VA-3000VA power supply products.

With precision linear amplification technology, output of very pure AC power can be realized; distortion factor lower than 0.5%; simulate normal and abnormal AC inputs and measure key electrical performance parameters of device under test.

Easy operation, perfect protection and self-diagnose function make it a reliable product for you.



■ Programmable DC power supply

ITS9500 power supply test system's optional DC power can cover 100W-6KW power supply products.

Automatic gear technology, for regulating the voltage and current; high accuracy and high resolution, low ripple and low noise; LIST editing function, for application in the voltage drop test of DC-DC converter and inverter, battery charge and product life cycle test. It can be applied in the over-voltage protection test.



■ DC electronic load

ITS9500 power supply test system's optional electronic load can cover 150W-500KW load products.

Four operating modes (CC, CV, CR, CW), for meeting test demands of different power products; high speed and programmable dynamic load characteristics, for testing the stability of power products; arbitrary waveform simulation function (LIST), for observing whether the device under test can be operated normally in the application field; short current test function; sense function, for ensuring accuracy of long distance measurement; and perfect protection, your priority for test.



■ Switch analyzer

Switch analyzer is an important part of hardware of ITS9500 power supply test system. This product integrates the product functions of oscilloscope, data acquisition card, IO card and power meter, thus facilitating performance tests of switching power supply and reducing cost and space for customers.



Your Best Power Test Solution

ITS9500 Power Supply Auto test system

Rich optional accessories

IT-E181 is a fixture which can work with ITS9500 test system to realize multiple-channel test. It can connect 4 test systems and test 4 devices under test with the same specification, thus significantly improving the production efficiency and reducing production cost for customers.

IT-E181 supports test for several types of charger interface and visual display of test results or display of specific test data on the test interface are supported.

IT-E256 extended keyboard can be used for controlling the start and stop of ITS9500 system test program, avoid clicking mouse. The system is compact and easy to use, thus improving test efficiency.



IT-E181 system fixture

IT-E256	Extended keyboard
IT-E181	Power test system fixture Four synchronous test
IT-E182	Power test system fixture Four sequential test
IT-E187	Relay card
IT-E190-6A	Current sensor
IT-E190-15A	Current sensor
IT-E190-25A	Current sensor



IT-E256 extended keyboard

LED drive power test

ITS9500 power supply system is the best test system for LED power as it can measure several devices under test at one time, thus significantly improving the capacity of production line.

The system is provided with test items for devices under test with performance optimization (LED drive power for lighting or backlight). Users only have to define test conditions and specifications on the standard test items for test.

Optimized test scheme covers the following 6 types of power test requirement: output characteristic test for detection of general performance of device under test; input characteristic test for detection of input parameters of power supply, protection test for testing the protection circuit which triggers the power supply; real-time and transient measurement of transient status of power supply at turn-on and turn-off, and voltage RMP time at turn-on and turn-off of measurement power; stability test for detection of stability of device under test during the change of input power and load; comprehensive test, providing test environment and other special functions.



Recommended configuration

Measuring range	LED model
Input	300W
Output	500V

DC-DC power supply test scheme

DC-DC power is widely used in military industry, communication equipment, vehicle, electronics and aerospace. ITS9500 test system is particularly suitable for high-efficient automatic test of DC-DC power. With the powerful function of ITS9500, stable and reliable test process can be realized and accurate test data can be obtained.

Recommended configuration

Measuring range	LV model	LV affordable model	HV model
Input	250W	150W	300W
Output	120V	72V	500V



DC-DC power supply

Vehicle-mounted charger test scheme

ITS9500 test system is provided with automatic gear technology to regulate voltage and current with high accuracy and resolution, low ripple and noise. LIST editing function provides input/output characteristics, efficiency and protection item test for vehicle-mounted charger, thus greatly reducing test time.

Recommended configuration

Measuring range	LV model	LV affordable model
Input	250W	150W
Output	120V	72V



Vehicle-mounted charger

AC-DC power supply test scheme

With continuous technological development, the application of switching power supply also increases. As switching power supply will generate harmonic interference on input electric power, in turn, the harmonic wave of electric power will affect the electronic product. The disturbance test of ITS9500 power supply automatic test system is for test of influence of power supply fluctuation, and is a good helper for engineers.

Recommended configuration

Measuring range	LV model	LV affordable model	HV model
Input	250W	150W	300W
Output	120V	72V	500V



Switching Power Supply

Your Best Power Test Solution

ITS9500 Power Supply Auto test system

ITECH Products Selection Guide

* DC Electronic Load	
IT8700 series multi-channel electronic load	
Model	Specification
IT8731	80V/40A/200W
IT8732	80V/60A/400W
IT8732B	500V/20A/300W
IT8733	80V/120A/600W
IT8733B	500V/30A/500W
IT8722	80V/20A/250W*CH1 80V/20A/250W*CH2 *1
IT8723	80V/45A/300W CH1 80V/45A/300W CH2 *1
IT8702	Mainframe for four modules
IT8703	Extended frame for four modules
*1: The total power of dual channel for IT8722 is 300W. *2: IT8731,IT8732,IT8732B,IT8733,IT8733B and IT8722 should be equipped with IT8702. *3: Main frame equips built-in RS232/USB/GPIB/Ether Net interface.	
IT8800 series multi-function input electronic load (standard RS232/USB/GPIB interface)	
Model	Specification
IT8811	120V/30A/150W
IT8812	120V/30A/250W
IT8812B	500V/15A/200W
IT8812C	120V/60A/250W
IT8813	120V/60A/750W
IT8813B	500V/30A/750W
IT8814	120V/120A/1500W
IT8814B	500V/60A/1200W
IT8816	120V/240A/3000W
IT8816B	500V/100A/2500W
IT8817	120V/360A/4500W
IT8817B	500V/120A/3600W
IT8818	120V/480A/6000W
IT8818B	500V/150A/5000W
IT8830	120V/500A/10KW
IT8830B	500V/200A/10KW
IT8830H	800V/100A/10KW
IT8831	120V/750A/15KW
IT8831B	500V/300A/15KW
IT8831H	800V/150A/15KW
IT8832	120V/1000A/20KW
IT8832B	500V/400A/20KW
IT8832H	800V/200A/20KW
IT8833	120V/1500A/25KW
IT8833B	500V/500A/25KW
IT8833H	800V/250A/25KW
IT8834B	500V/600A/30KW
IT8834H	800V/300A/30KW
IT8835B	500V/700A/35KW
IT8835H	800V/350A/35KW
IT8836B	500V/800A/40KW
IT8836H	800V/400A/40KW
IT8837B	500V/900A/45KW
IT8837H	800V/450A/45KW
IT8838B	500V/1000A/50KW
IT8838H	800V/500A/50KW
IT8839B	500V/1100A/55KW
IT8839H	800V/600A/55KW
*We receive custom design for electronic loads with higher power or special specification	
IT8500+ series upgrade single channel electronic load (optional RS232/USB/GPIB interface)	
Model	Specification
IT8511+	120V/30A/150W
IT8512+	120V/30A/300W
IT8512A+	150V/30A/300W
IT8512B+	500V/15A/300W
IT8512C+	120V/60A/300W
IT8513C+	120V/120A/600W
IT8514B+	500V/60A/1500W
IT8514C+	120V/240A/1500W
IT8516C+	120V/240A/3000W
IT8200 series economic electronic load	
Model	Specification
IT8211	60V/30A/150W
* DC Power Supply	
IT6500 series auto-range programmable DC power supply (standard RS232/USB/GPIB/RS485 interface)	
Model	Specification
IT6512 (with Dynamic test and DIN waveform)	80V/60A/1200W
IT6512A	80V/60A/1200W
IT6512D	80V/120A/1600W

IT6500 series auto-range programmable DC power supply (standard RS232/USB/GPIB/RS485 interface)	
IT6513 (with Dynamic test and DIN waveform)	150V/30A/1200W
IT6513A	150V/30A/1200W
IT6522A	80V/120A/3000W
IT6523D	160V/120A/3000W
IT6533A	160V/120A/6000W
IT6532A	80V/240A/6000W
IT6900A series multi-function programmable power supply (standard RS232/USB/GPIB interface)	
Model	Specification
IT6922A	60V/5A/100W
IT6932A	60V/10A/200W
IT6942A	60V/15A/360W
IT6952A	60V/25A/600W
IT6953A	150V/10A/600W
IT6860A series dual-range programmable power supply (standard RS232/USB interface)	
Model	Specification
IT6861A	20V/5A/100W 8V/9A/72W
IT6862A	32V/3A/96W 12V/6A/72W
IT6863A	72V/1.5A/108W 32V/3A/96W
IT6872A	35V/4A/140W 15V/7A/105W
IT6873A	75V/2A/150W 32V/4A/128W
IT6874A	150V/1.2A/180W 60V/2A/120W
IT6100 series high accuracy programmable power supply (optional RS232/USB/GPIB interface)	
Model	Specification
IT6151	5.2V/60A/312W
IT6152	20V/27A/540W
IT6153	30V/18A/540W
IT6154	60V/9A/540W
IT6162	20V/48A/960W
IT6163	30V/32A/960W
IT6164	60V/16A/960W
IT6163S	30V/40A/1200W
IT6164S	60V/20A/1200W
IT6165S	40V/30A/1200W
IT6100B series accuracy programmable power supply (standard RS232/USB/GPIB interface)	
Model	Specification
IT6121B	20V/5A/100W
IT6122B	32V/3A/96W
IT6123B	72V/1.2A/86W
IT6132B	30V/5A/150W
IT6133B	60V/2.5A/150W
IT6300B series triple-channel programmable power supply (standard RS232/USB/GPIB interface)	
Model	Specification
IT6322B	30V/3A/90W*2CH 5V/3A/15W*1CH
IT6332B	30V/6A/180W*2CH 5V/3A/15W*1CH
IT6333B	60V/3A/180W*2CH 5V/3A/15W*1CH
IT6302 triple-channel programmable power supply (application: education industry/laboratory/volume demand)	
Model	Specification
IT6302	30V/3A/90W*2CH 5V/3A/15W*1CH
IT6700 series digital control power supply	
Model	Specification
IT6720	60V/5A/100W
IT6721	60V/8A/180W
IT6700H series high voltage programmable DC power supply (standard RS232/USB/GPIB interface)	
Model	Specification
IT6723G	600V/5A/850W
IT6723B	150V/20A/850W
IT6723C	32V/110A/850W
IT6723	80V/40A/850W
IT6723H	300V/10A/850W
IT6724B	150V/20A/1500W
IT6724C	32V/110A/1500W
IT6724H	300V/10A/1500W
IT6724G	600V/5A/1500W
IT6724	80V/40A/1500W
IT6726B	160V/40A/3000W
IT6726H	300V/20A/3000W
IT6726G	600V/10A/3000W
IT6726V	1200V/5A/3000W
*AC Power Supply	
IT7300 series AC power supply (standard RS232/USB/LAN interface)	
Model	Specification
IT7321	300V/3A/300VA
IT7322	300V/6A/750VA
IT7324	300V/12A/1500VA
IT7326	300V/24A/3000VA



Please contact ITECH via sales@itechate.com, To get ITECH products information and service information.

China

TEL: +86-25-52415098
FAX: +86-25-52415068
E-mail:sales@itechate.com
108# XiShanqiao Nanlu,Nanjing city,China

Taiwan

TEL:+886-3-6684333
FAX:+886-3-6683152
E-mail:sales@itechate.com.tw
16F, #65 Gaotie 7th Rd., Zhubei City, Hsinchu
County 302 Taiwan

USA

22820 Savi Ranch Parkway Yorba Linda,CA 92887
U.S.A.
E-mail:usa@itechate.com

Korea

#153-783,Rm601,ByuckSan,GaSan-Dong,Seoul,
Korea
E-mail:korea@itechate.com