

# IT6900A Series Power supply

To get more products information, please visit our website [www.itechate.com](http://www.itechate.com)



VFD display

High accuracy and high resolution

Low ripple and low noise

Output timer function(time range 0.1~9999.9S)

Remote sense

*Your Best Power Solution*

ITECH ELECTRONIC CO.,LTD.

 **ITECH ELECTRONICS**

ITECH ELECTRONICS

# ITECH

Your Power Test Solution

## About ITECH



### About ITECH

ITECH is a member of the B+K Precision group, the fourth most recognized instrument brand in the USA. ITECH is devoted to research and develop in the field of power supply's test and measurement. The company specialized over the years and is skilled in producing high power electronic testing systems, high-performance automated testing systems, power supplies and electronic loads.

ITECH products are widely used by enterprises in all fields. Products are well known for high performance & quality and are exported to over thirty countries in Europe, North America and Asia.

### Quality Policy

ITECH always insists the principle to research and develop the highest technical products and provide you the best performance through continuously improvement.

### Sales and Service

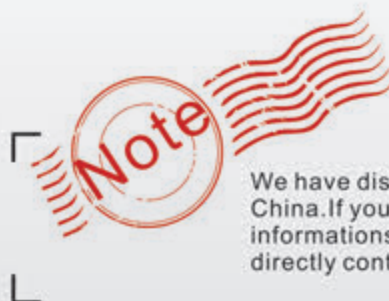
ITECH provides you the best sales and after-sales service in China, America, Europe and Asia.

### Vision

ITECH aims at to satisfy the customers different testing requests. We will continuously devote to the manufacturing and R&D of power supply and electronic loads. Meanwhile, we will provide you the best service on the side of excellent technology and worldwide sales network.

### Our customer

ITECH products are well known for its excellent performance worldwide sales network and quality. Our major customers includes:  
ABB, Bosch, Intel, LG, Nokia, Siemens, Sony, Fuji, Volkswagen, Ford, General motors, Sony-Ericsson, Emerson, Foxconn, Tsing-Hua university etc.



We have distributors in global and many places of China. If you need local service, please find related informations from our website [www.itechate.com](http://www.itechate.com) or directly contact with us. directly contact with us.



## IT6900A Series

Multi functional and high performance power supply

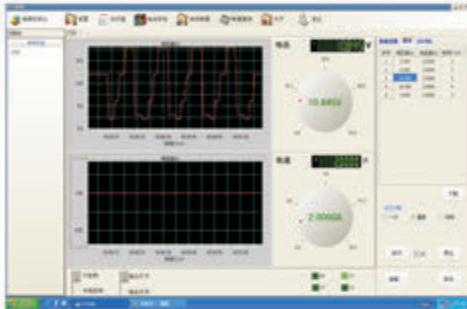
- High visibility vacuum fluorescent display (VFD)
- Digital programmable interface
- Output switching control
- High accuracy and high resolution
- Low ripple and low noise
- Over voltage, current and overheating protection
- Memory capacity:9x8
- Equipped with anti-skid tripod portable rugged chassis
- Intelligent air cooling control
- Power off memory
- Can set the output timer(0.1 ~ 99999.9 s)
- Rich SCPI orders to facilitate the formation of intelligent test platform
- Remote Sense function

IT6900A is a single output programmable power supply with 1mV/0.1mA high resolution and accuracy. Built-in RS232, USB, GPIB interface, making communication much faster. Remote sense function can effectively remove the effect of the voltage drop in the connection wires. Equipped with digital voltmeter (4 1/2). Optional external analog interface, user could via 0-10V to program and monitor 0-100% voltage and current. IT6900A series has up to five models, power range is from 100W-600W.

# ITECH

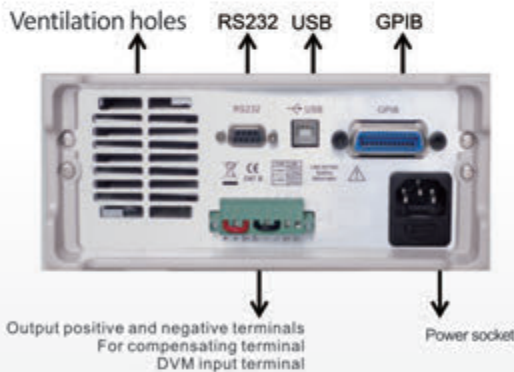
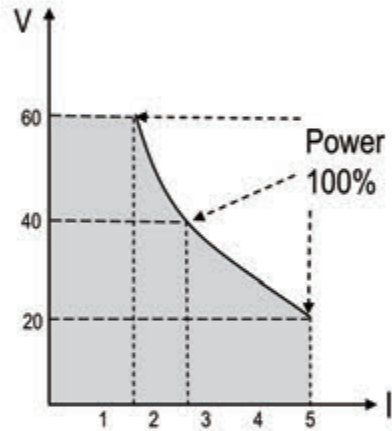
Your Power Test Solution

IT6900A provide free IT7000 control software for you test



IT6900A supports standard RS232, USB, GPIB interface, And provide free IT7000 software, The IT7000 software with powerful monitoring function, can record and display the voltage and current, and programmable automatic test.

Model	Power	voltage	current
IT6922A	100W	60V	5A
IT6932A	200W	60V	10A
IT6942A	360W	60V	15A
IT6952A	600W	60V	25A
IT6953A	600W	150V	10A



IT6900A series rear panel

## IT6900A Series remote sense

Remote voltage sensing is used to maintain at the load and reduce the degradation of regulation. Remote test allows direct on the power output terminal measuring to improve the measuring accuracy. S+, S- is the remote measuring terminal. +, - is the output positive and negative terminals. When using a remote measuring function, need to disconnect the wires connected with "+, -". Lead "S+, S-" connected to the object to be measured.

## The built-in digital voltage meter

IT6900A provides a built-in Digital Volt meter which can measure DC volts in a range from 0.001V-61.000v. The voltage value is displayed on the left bottom field of the display.

## Convenient panel operation

You can set voltage/current by three methods: Adjust by knob, set by numeric keys, moving cursor by left and right keys, and then adjust by up and down arrow keys.

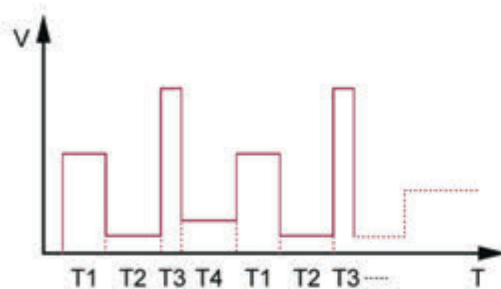
## The output timer function

IT6900A supports output on timer function. If Timer State is set to ON, then power supply output will turn off after the timer elapsed. The timer setting range is 0.1-99999.9S.

## Auto Range function

IT6900A series power supply has adopted Auto-range technology. One unit could replace multiple units with different specifications. Take IT6932A(60V/10A/200W) as an example, the user could use it as a 60V/3.3A/200W instrument and also a 20V/10A/200W unit. Save customer's cost.

## List mode



## Over voltage protection function

IT6900A provides over voltage protection function. Once OVP point is triggered, the DC source will turn the output off. The indicator OVP will be lit.

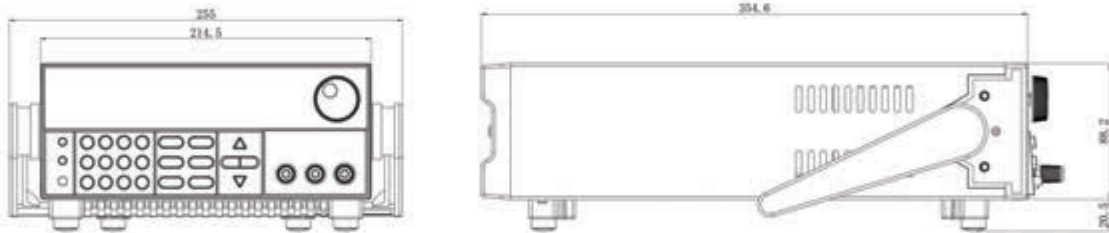
IT6900A as a standard interface, if you need to RS485 communication interface and an external analog interface can select optional IT6900B series

**BEST**  
YOUR **POWER SOLUTION**

## IT6900A Series Specifications

specifications		IT6922A	IT6932A	IT6942A	IT6952A	IT6953A
Input rating ( 0 °C~40 °C)	voltage	0~60V	0~60V	0~60V	0~60V	0~150V
	current	0~5A	0~10A	0~15A	0~25A	0~10A
	power	100W	200W	360W	600W	600W
Load Regulation±(%of output+offset)	voltage	≤0.01%+3mV	≤0.01%+5mV	≤0.01%+8mV	≤0.01%+15mV	≤0.01%+5mV
	current	≤0.05%+2mA	≤0.05%+4mA	≤0.05%+6mA	≤0.1%+10mA	≤0.05%+4mA
Line Regulation±(%of output+offset)	voltage	≤0.01%+3mV	≤0.01%+5mV	≤0.01%+8mV	≤0.01%+15mV	≤0.01%+5mV
	current	≤0.05%+2mA	≤0.05%+4mA	≤0.05%+6mA	≤0.1%+10mA	≤0.05%+4mA
Setup Resolution	voltage	1mV	1mV	1mV	1mV	1mV(<100V)10mV(>100V)
	current	0.1mA	0.1mA	0.1mA	0.1mA	0.1mA
Readback Resolution	voltage	1mV	1mV	1mV	1mV	1mV(<100V)10mV(>100V)
	current	0.1mA	0.1mA	0.1mA(<10A)1mA(>10A)	0.1mA(<10A)1mA(>10A)	0.1mA
Setup Accuracy( in 12 months ) (25°C±5°C) ±(%of output+offset)	voltage	≤0.03%+5mV	≤0.03%+5mV	≤0.03%+5mV	≤0.03%+5mV	≤0.03%+20mV
	current	≤0.1%+5mA	≤0.1%+10mA	≤0.1%+15mA	≤0.1%+25mA	≤0.1%+10mA
Readback Accuracy( in 12 months ) (25°C±5°C) ±(%of output+offset)	voltage	≤0.03%+5mV	≤0.03%+5mV	≤0.03%+5mV	≤0.03%+5mV	≤0.03%+20mV
	current	≤0.1%+5mA	≤0.1%+10mA	≤0.1%+15mA	≤0.1%+25mA	≤0.1%+10mA
Ripple(20Hz~20MHz)	voltage	≤5mVp-p	≤8mVp-p	≤15mVp-p	≤20mVp-p	≤40mVp-p
	current	≤5mA rms	≤6mA rms	≤8mA rms	≤15mA rms	≤6mA rms
Sample rate		10HZ			10HZ	
Dimension(mm)		214.5mmW×88.2mmH×354.6mmD			214.5mmW×88.2mmH ×445mmD	
Weight( Net weight)		7.7Kg			15Kg	

## IT6900A Series Reference dimension



- IT6922A/IT6932A/IT6942A(214.5mmW × 88.2mmH × 354.6mmD)
- Attention:IT6952A /IT6953A is lengthened,Power is the size of:214.5mmW × 88.2mmH × 445mmD

Standard accessories

power cord/test report/user's manual/certificate

Optional accessories (If you choose 6900B series)

analog interface Rs485 communication interface

To get more latest information, please visit website.



CD is available upon request



- Application software >
- Products registration >
- Application manual >
- Newest products >
- User's manual >

Products overview provided in this catalogue are only for your reference, neither relevant advices and recommendations nor parts in any contract. As our products are constantly updated, we remain the rights to modify the technical specifications. Please understand if we can not inform you in time. Thank you Please visit our website [www.itechate.com](http://www.itechate.com) to get more information.

To receive more products information, please visit our website: [www.itechate.com](http://www.itechate.com)

# ITECH

Your Power Test Solution



To get more products information, please visit our website [www.itechate.com](http://www.itechate.com)

China  
TEL : 4006-025-000  
FAX : 4000-025-888  
108# Xishanqiao Nan lu,  
Nanjing, china

USA  
Tel: 714-9219095  
Fax: 714-9216422  
22820 Savi Ranch Parkway  
Yorba Linda, CA92887 U.S.A

Europe  
Tel : 477-590101  
Fax : 477-572323  
32, rue Edouard Martel 42100-St  
Etienne France

TaiWan  
Tel: 02-72416677  
Fax: 02-72416688  
新北市深坑區北深路三段252號3F  
(C1A科学园区)

*Your Best Power Solution*

ITECH ELECTRONIC CO.,LTD.

TEL:86-25-52415098

FAX:86-25-52415268

Service Hotline : 4006-025-000